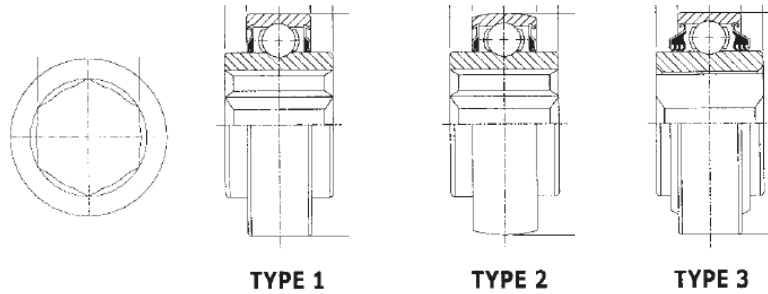


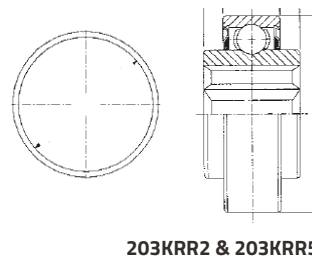


Deep Groove Hex Bore Ball Bearings

| Part No. | Type |
|----------------------------|------|
| 202KRR3 | 1 |
| 204KRR2 | 1 |
| 205KPP2 | 3 |
| 205KRR2 | 1 |
| 205KRRB2 | 2 |
| 206KRRB3 | 2 |
| 206KRR6 | 1 |
| 206KRRB6 | 2 |
| 206KRRB9 | 2 |
| 207KRRB9 | 2 |
| 207KRRB12 | 2 |
| 207KRRB17 (207KRRBAH02) | - |
| 209KRRB2 | 2 |
| 210RRB6 | - |



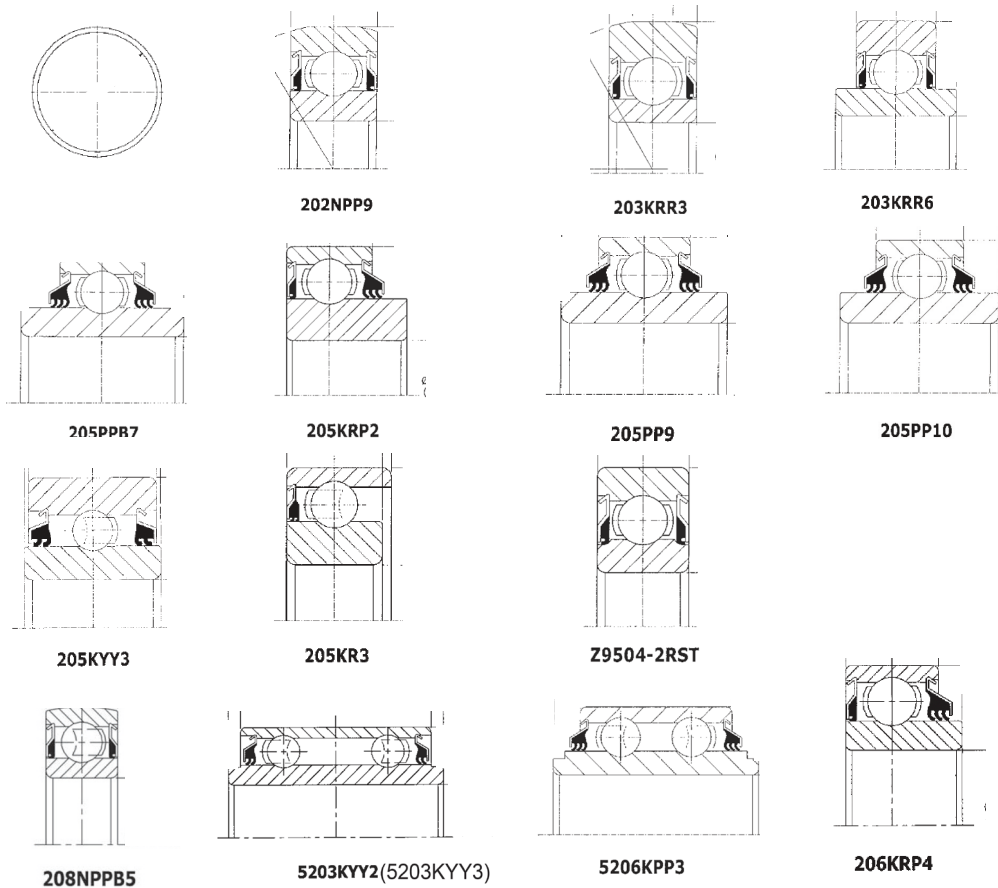
Deep Groove Round Bore Ball Bearings



| Part No. | Type |
|----------|------|
| 203KRR2 | 1 |
| 203KRR5 | 1 |
| 204RY2 | - |
| 205KYY10 | - |
| 206KRR13 | - |
| 6203KRR2 | - |

Deep Groove Round Bore Ball Bearings - Special Design

| Part No. |
|-------------------------|
| 202NPP9 |
| 203KRR3 |
| 203KRR6 |
| 204BBAR (Z9504-2RST) |
| 205KR3 |
| 205KRP2 |
| 205KYY3 |
| 205PPB7 |
| 205PP9 |
| 205PP10 |
| 206KRP4 |
| 208NPPB5 |
| 5203KYY2 |
| 5206KPP3 |

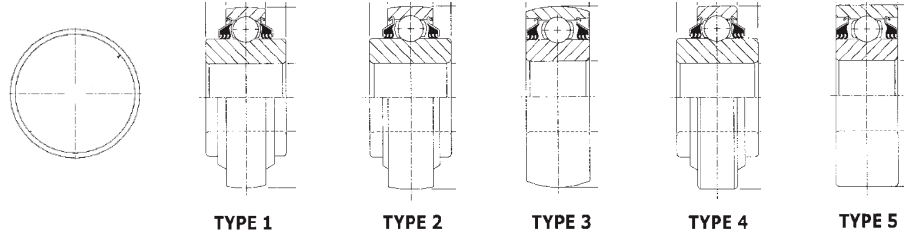


Agricultural Bearings (New Sizes Available)



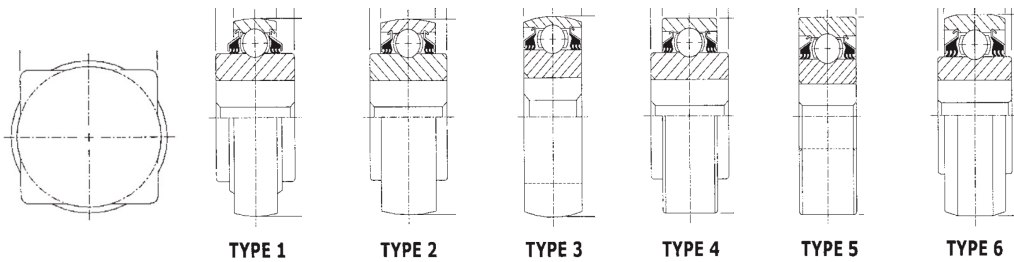
Disc Harrow Bearings - Round Bore

| Greaseable | |
|------------|------|
| Part No. | Type |
| GW208PPB2 | 1 |
| GW208PPB4 | 3 |
| GW208PPB7 | 2 |
| GW208PP10 | 4 |
| GW208PPB23 | 2 |
| GW209PPB2 | 3 |
| GW209PPB4 | 3 |
| GW209PPB11 | 1 |
| GW209PPB13 | - |
| GW210PP2 | 5 |
| GW210PPB2 | 3 |
| GW210PP3 | 5 |
| GW210PPB5 | 3 |
| GW210PP8 | 5 |
| GW210PP9 | 5 |
| GW211PP2 | 5 |



| Greaseable | | Greaseable | | Non-Greaseable | | Non-Greaseable | |
|------------|------|------------|------|----------------|------|----------------|------|
| Part No. | Type | Part No. | Type | Part No. | Type | Part No. | Type |
| GW211PPB2 | 3 | GW214PP2 | 5 | W208PPB2 | 1 | W210PPB2 | 3 |
| GW211PPB8 | 1 | GW214PPB2 | 3 | W208PPB4 | - | W210PP2 | 5 |
| GW211PPB9 | 1 | GW214PPB3 | 3 | W208PPB7 | 2 | W210PP8 | 5 |
| GW211PPB10 | 3 | GW214PPB5 | 2 | W208PP10 | 4 | W211PP2 | 5 |
| GW211PPB13 | 1 | GW214PPB6 | 1 | W208PPB23 | 2 | W211PPB2 | 3 |
| GW211PPB14 | 1 | GW214PPB9 | 3 | W209PPB2 | 3 | W214PP2 | 5 |
| GW211PP25 | 5 | GW216PP5 | 5 | W209PPB4 | 3 | W214PPB9 | 3 |

Disc Harrow Bearings - Square Bore



| Greaseable | | Greaseable | | Greaseable | | Non-Greaseable | | Non-Greaseable | |
|------------|------|------------|------|------------|------|----------------|------|----------------|------|
| Part No. | Type | Part No. | Type | Part No. | Type | Part No. | Type | Part No. | Type |
| GW208PP5 | 4 | GW208PP20 | 1 | GW211PPB6 | 6 | W208PP5 | 4 | W210PP4 | 5 |
| GW208PPB5 | 1 | GW208PPB12 | 6 | GW211PP17 | 4 | W208PPB5 | 1 | W210PPB4 | 3 |
| GW208PP6 | 4 | GW208PPB13 | 1 | GW211PP29 | 1 | W208PP6 | 4 | W210PPB6 | 2 |
| GW208PPB6 | 1 | GW208PPB17 | 8 | GW211PPB29 | 4 | W208PP8 | 4 | W211PP3 | 5 |
| GW208PP8 | 4 | GW209PPB5 | 2 | GW211PP3 | 5 | W208PPB8 | 2 | W211PPB3 | 3 |
| GW208PPB8 | 2 | GW209PPB8 | 1 | GW211PP30 | 5 | W208PP9 | 2 | W211PP5 | 4 |
| GW208PP9 | 2 | GW210PP4 | 5 | GW211PPB30 | 3 | W208PPB12 | 6 | W211PPB6 | 6 |
| GW208PP8 | 4 | GW210PPB4 | 3 | GW214PPB4 | 3 | W208PPB13 | 1 | W211PP29 | 1 |
| GW208PPB8 | 2 | GW210PPB6 | 2 | GW216PP2 | 4 | W208PP20 | 1 | W211PP30 | 5 |
| GW208PP9 | 2 | GW211PPB3 | 3 | GW216PPB2 | 1 | W208PPB6 | 1 | W211PPB30 | 3 |
| GW208PP17 | 4 | GW211PP5 | 4 | GW216PPB4 | 1 | W209PPB5 | 2 | W211PP34 | 4 |

Disc Harrow Bearings - Hex Bore

| Greaseable | | Non-Greaseable | |
|------------|------|----------------|------|
| Part No. | Type | Part No. | Type |
| GW208KRRB5 | 2 | W208KRRB5 | 2 |
| GW208KRRB6 | 2 | W208KRRB6 | 2 |
| G210KPPB2 | 4 | W208PPB16 | 4 |
| | | W208PP21 | 3 |

